

# MIUNN

Karri Monni | 2011



# MIUNN

**Karri Monni** | 2011

When minimalism embraces. It involves technology and the 3D processing of a wood sheet. It involves a hand that designs, thinking of itself, of the palm that holds water and sand. The result is sinuous MIUNN, with an embracing seat and perfect support for the back. Available in a chair or stool version, it comes in different heights. Serenely, just as it was designed.



# MIUNN

Karri Monni | 2011

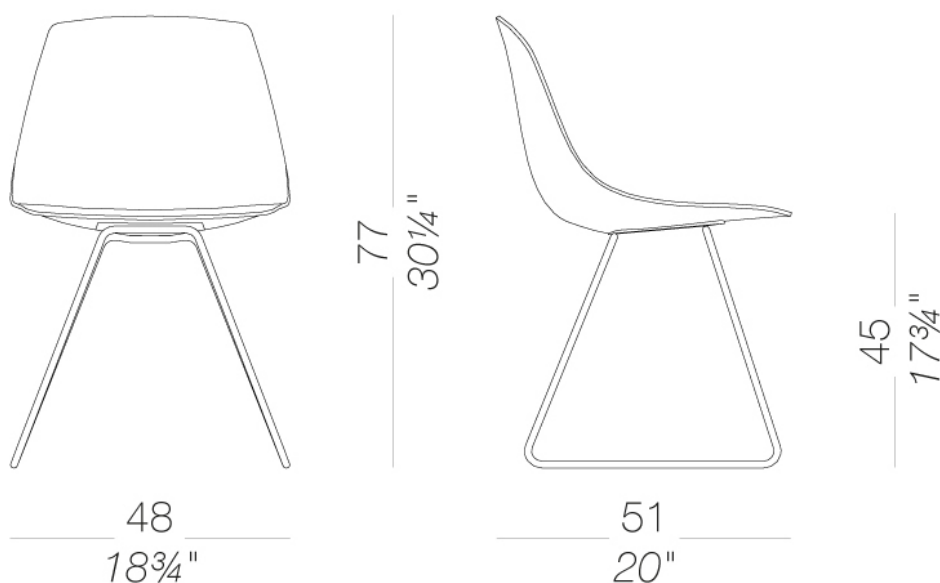


## S160 slide-frame base

### MIUNN | S160 S161 S162 S164

Family of chairs with shell in 3D moulded plywood in several finishes, or in Baydur® or fully upholstered. 4 star swivel base, 4-leg base or sled base which are either mat chromed or powder coated or with wooden legs. This seating program includes a stool with fix height or height adjustable.

TEST EN 1728:2012 AC:2013 6.17 - EN 16139:2013 - L2 extreme



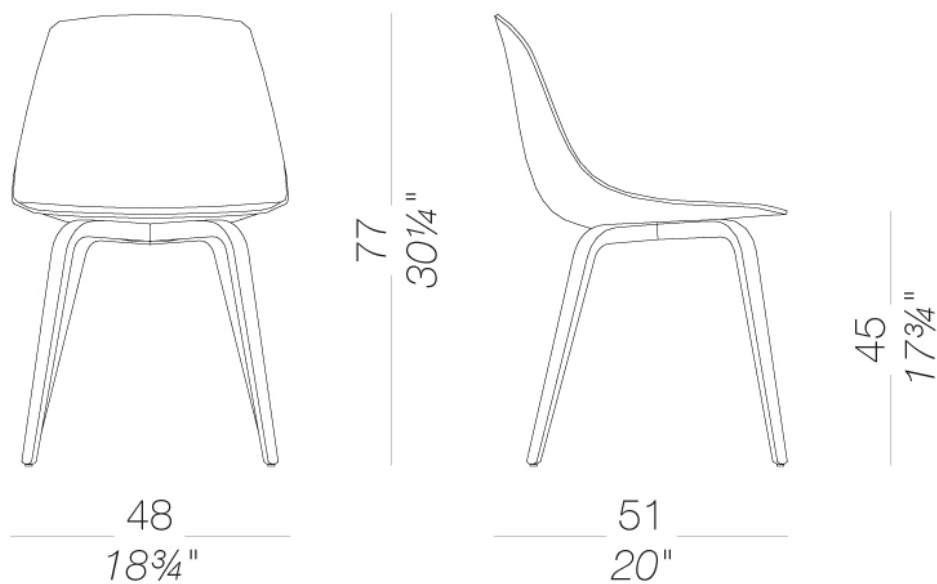
# MIUNN

Karri Monni | 2011

## S164 With four wood legs

### MIUNN | S160 S161 S162 S164

Family of chairs with shell in 3D moulded plywood in several finishes, or in Baydur® or fully upholstered. 4 star swivel base, 4-leg base or sled base which are either mat chromed or powder coated or with wooden legs. This seating program includes a stool with fix height or height adjustable.



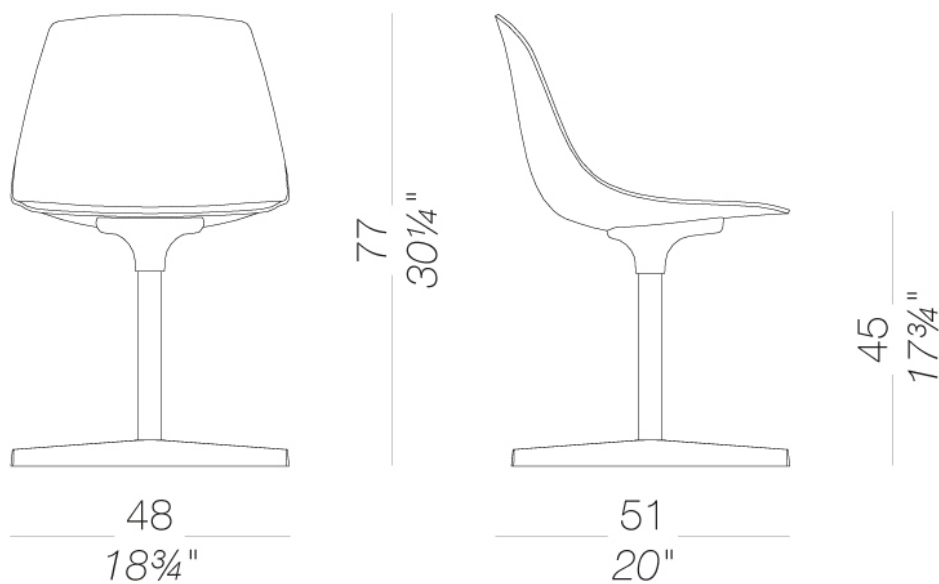
# MIUNN

Karri Monni | 2011

## S162 Star-shaped swivel base

### MIUNN | S160 S161 S162 S164

Family of chairs with shell in 3D moulded plywood in several finishes, or in Baydur® or fully upholstered. 4 star swivel base, 4-leg base or sled base which are either mat chromed or powder coated or with wooden legs. This seating program includes a stool with fix height or height adjustable.



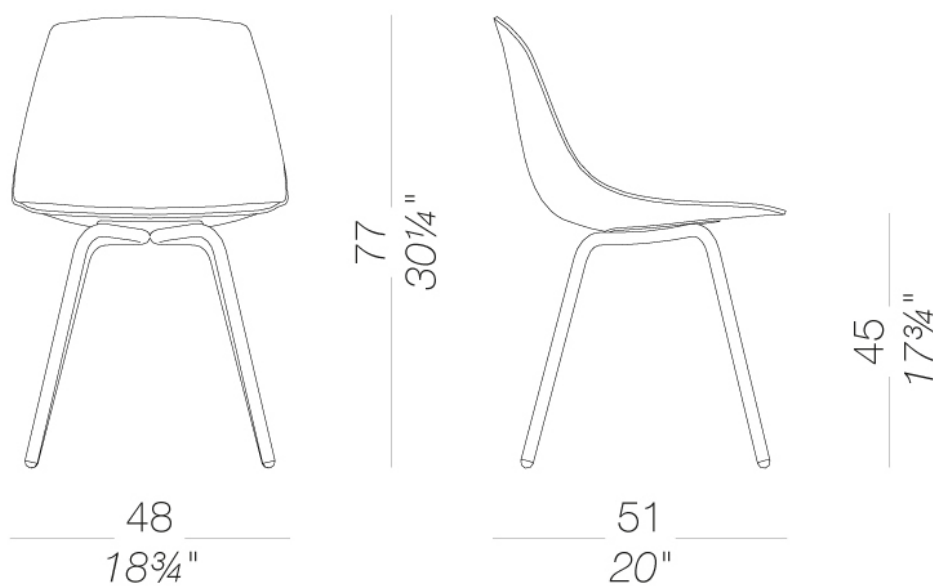
# MIUNN

Karri Monni | 2011

## S161 4-legged

### MIUNN | S160 S161 S162 S164

Family of chairs with shell in 3D moulded plywood in several finishes, or in Baydur® or fully upholstered. 4 star swivel base, 4-leg base or sled base which are either mat chromed or powder coated or with wooden legs. This seating program includes a stool with fix height or height adjustable.



# MIUNN

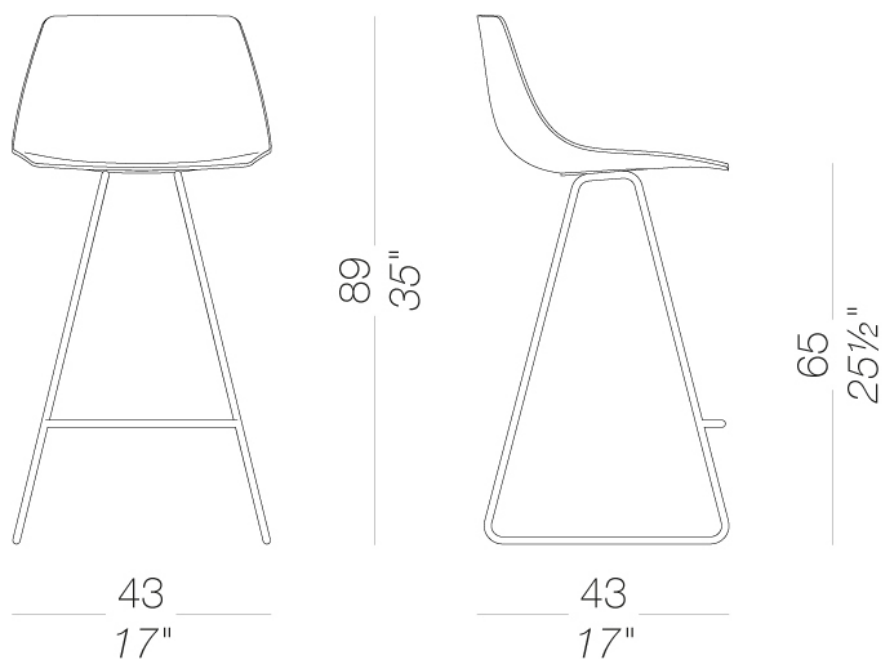
Karri Monni | 2011

## S104\_65 counter stool with slide-frame base H65

### MIUNN | S104 S105

Stool in two heights with woden legs or mat chromed frame. Also available in powder coated black or white with glides in Lexan® and felt. Seat formed of a single shell using 3D ply moulding technology in several wood finishes, or in Baydur® polyurethane white or black lacquered or totally upholstered in fabric, leather or eco-leather.

TEST EN 1728:2012 AC:2013 6.4-6.5 - EN 16139:2013 - L2 extreme



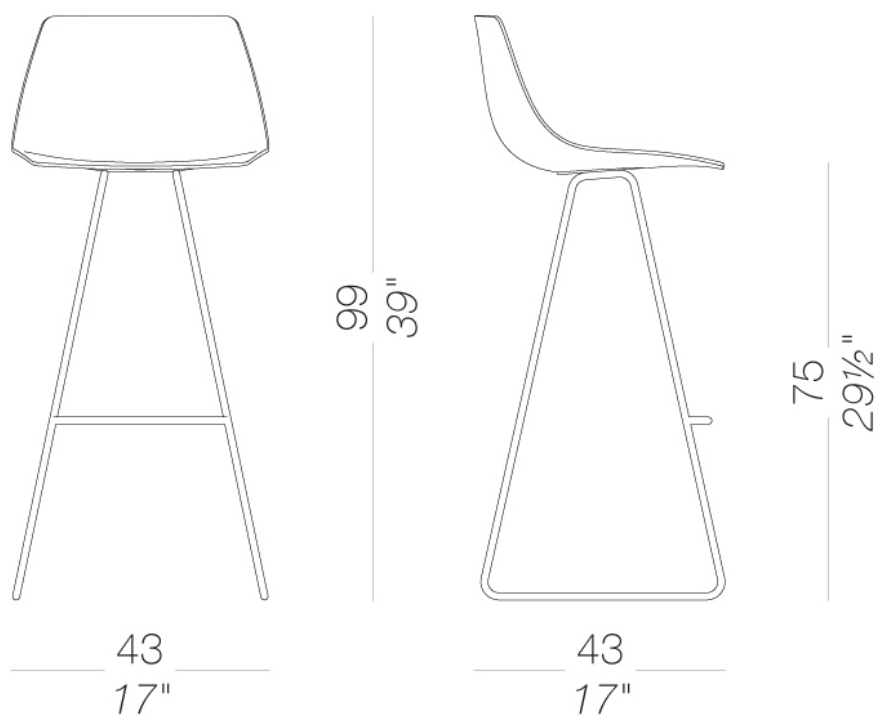
# MIUNN

Karri Monni | 2011

## S104\_75 Bar stool with slide-frame base H75

### MIUNN | S104 S105

Stool in two heights with woden legs or mat chromed frame. Also available in powder coated black or white with glides in Lexan® and felt. Seat formed of a single shell using 3D ply moulding technology in several wood finishes, or in Baydur® polyurethane white or black lacquered or totally upholstered in fabric, leather or eco-leather.





# MIUNN

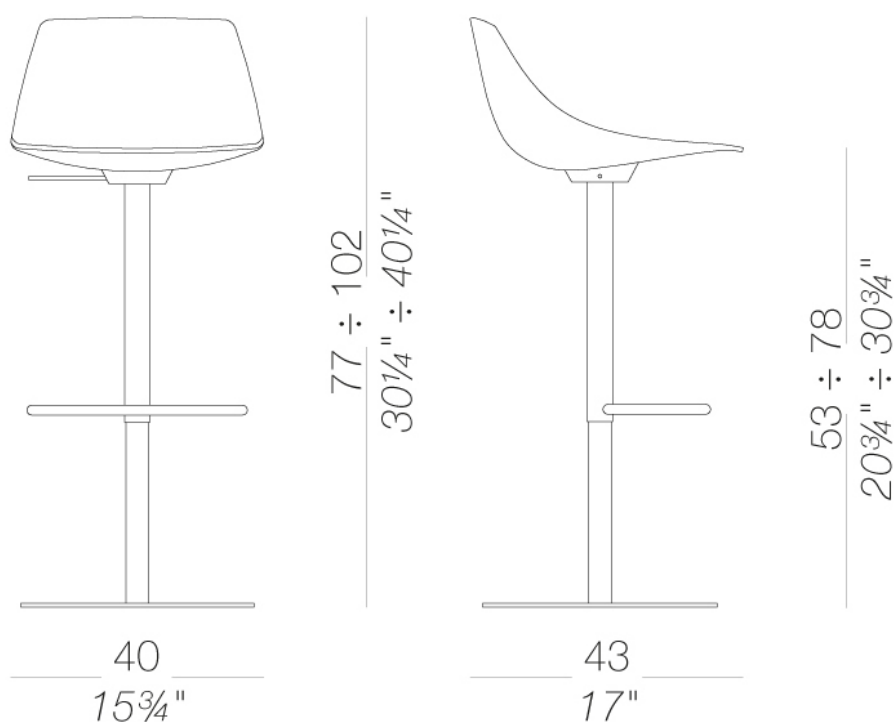
Karri Monni | 2011

## S104T Height-adjustable piston stool with round base H53 ÷ 78

### MIUNN | S104 S104T

Stool with swivel seat and adjustable height with column in sandblasted stainless steel Aisi 304 and round or square base covered by a stainless steel sheet "linen fabric" pattern. The frame with round base is also available entirely powder coated. Seat formed of a single shell using 3D ply moulding technology in several wood finishes, or in Baydur® polyurethane white or black lacquered or totally upholstered in fabric, leather or eco-leather.

TEST EN 15373:2007 - L3 severe



# MIUNN

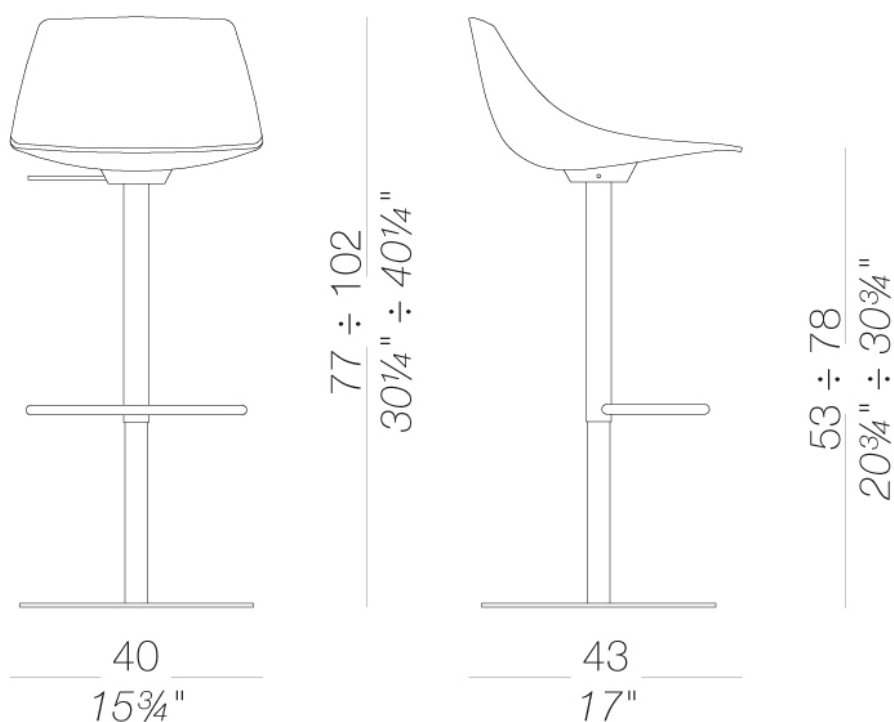
Karri Monni | 2011

## S104 height-adjustable piston stool with square base H53 ÷ 78

### MIUNN | S104 S104T

Stool with swivel seat and adjustable height with column in sandblasted stainless steel Aisi 304 and round or square base covered by a stainless steel sheet "linen fabric" pattern. The frame with round base is also available entirely powder coated. Seat formed of a single shell using 3D ply moulding technology in several wood finishes, or in Baydur® polyurethane white or black lacquered or totally upholstered in fabric, leather or eco-leather.

TEST EN 15373:2007 - L3 severe



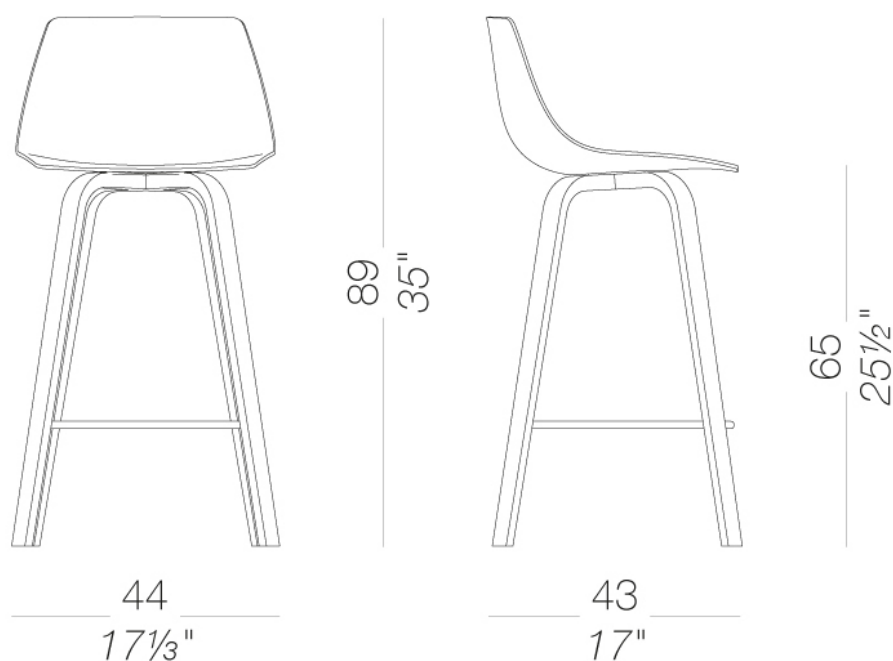
# MIUNN

Karri Monni | 2011

## S105\_65 counter stool with wood legs H65

### MIUNN | S104 S105

Stool in two heights with wooden legs or mat chromed frame. Also available in powder coated black or white with glides in Lexan® and felt. Seat formed of a single shell using 3D ply moulding technology in several wood finishes, or in Baydur® polyurethane white or black lacquered or totally upholstered in fabric, leather or eco-leather.



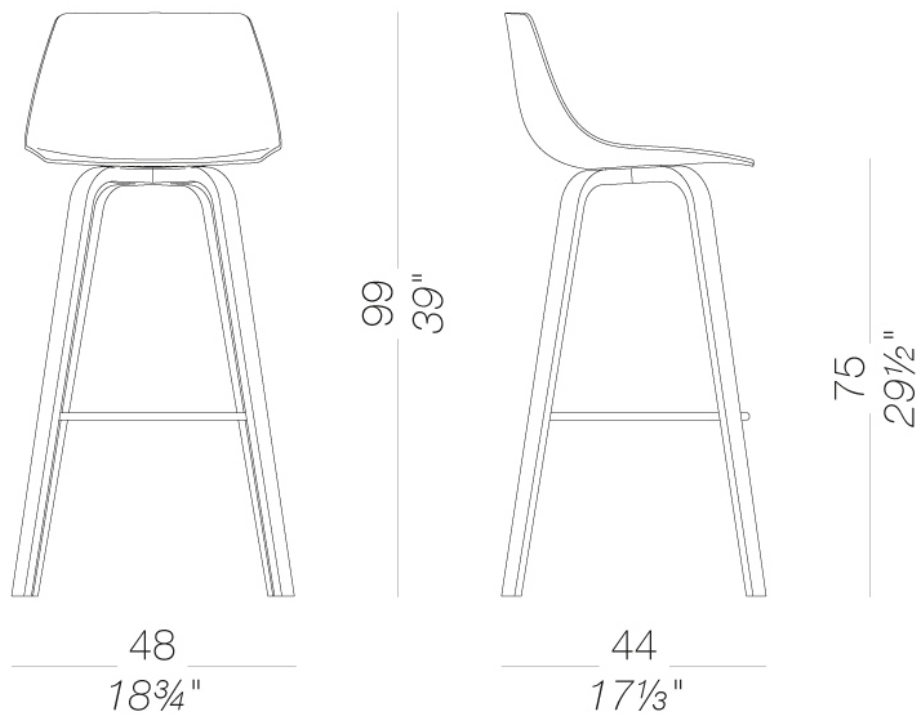
# MIUNN

Karri Monni | 2011

## S105\_75 bar stool with wood legs H75

### MIUNN | S104 S105

Stool in two heights with wooden legs or mat chromed frame. Also available in powder coated black or white with glides in Lexan® and felt. Seat formed of a single shell using 3D ply moulding technology in several wood finishes, or in Baydur® polyurethane white or black lacquered or totally upholstered in fabric, leather or eco-leather.



# MIUNN

Karri Monni | 2011

## frame



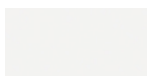
wood  
blanch oak  
1 Colors



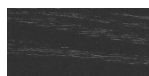
powder coating  
black  
1 Colors



metal  
stainless steel  
1 Colors



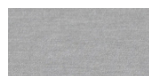
powder coating  
white  
1 Colors



wood  
black open pore  
1 Colors



metal  
mat chromed  
1 Colors



metal  
aluminium  
1 Colors

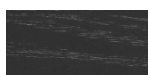
## shell



plastics  
Baydur@  
2 Colors



wood  
blanch oak  
1 Colors



wood  
black open pore  
1 Colors



wood  
oak dark walnut  
1 Colors



wood  
Canaletto walnut  
1 Colors

## upholstery



fabric  
Hallingdal 65  
47 Colors



fabric  
Canvas 2  
40 Colors



fabric  
Steelcut Trio 3  
48 Colors



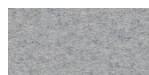
fabric  
Remix 3  
24 Colors



fabric  
Clara 2  
24 Colors



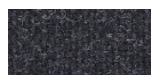
fabric  
Fiord 2  
24 Colors



fabric  
Divina MD  
24 Colors



fabric  
Divina Melange 3  
24 Colors



fabric  
Tonica 2  
39 Colors



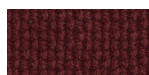
fabric  
Medley  
37 Colors



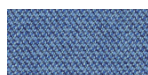
fabric  
Maya  
43 Colors



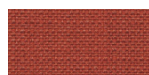
fabric  
Jet  
44 Colors



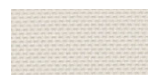
fabric  
Lapalma Smart  
18 Colors



fabric  
Capture  
43 Colors



fabric  
Crisp  
40 Colors



fabric  
Nattè  
23 Colors



fabric  
Iris  
24 Colors



fabric  
Steelcut 2  
37 Colors



leather  
leather  
7 Colors



ecoleather  
GRIMM FR  
24 Colors



ecoleather  
Valencia c5  
59 Colors

**consult the portfolio for the range of colors, fabrics, eco-leather, soft-leather.**

## use and maintenance instructions

Clean all parts in wood, leather, fabric and metal with a damp cloth or a diluted neutral cleaner. Do not use cleaners with alcohol, bleach, solvent or abrasive products. Any liquid spilt on the product must be wiped up immediately. When lifting or moving the product, hold it on the structure and not under the seat. The product should not be subjected to unbalanced weights, as it is designed for a proper rest on the foothold (on four legs or on the base). Our company relieves from any responsibility in case of damage caused to fragile floors. Avoid any improper use of the product: do not step on the product, on the footrest or on the armrests. Avoid any movements that could compromise the proper functionality of the product or the safety of the users. Wood and leather, being natural materials, could be easily damaged. Small impurities or imperfections are within quality standard range. Do not expose the product to weather conditions or atmospheric agents, nor to heat sources over 40°C. Also products for outdoor use could be afflicted by atmospheric agents. The product could undergo possible exterior changes due to particular exposure to heat, humidity and saltiness. An appropriate and frequent maintenance and cleaning of the product enhances its durability. The product could change colour and shade, if exposed to direct sunlight. Maintenance has to be carried out by experienced staff. Dispose of the package only after assembling the product, in order to avoid the loss of ironmongery and components. Once the product has been dismantled, the product itself or its components must be given to the public garbage disposal system, according to the legislation in force.