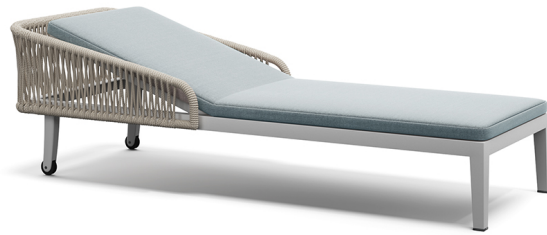


ATMOSPHERA



CHAISE LONGUE

Dream 2.0 Chaise Longue

Designed by Atmosphera Creative Lab

Aluminium frame epoxy painted for outdoors, hand-woven thermoplastic acrylic Teflon fibre, waterproof and easy to clean.

The material is elastic and has a soft appeal like textile weaves, characterised by its resistance to UV rays and its drying speed.

Stackable chaise longue.

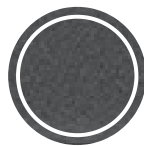
Cover available on request

Size: 205 x 72 x 53 cm **Weight:** 36 Kg **Volume:** 0,80 m³

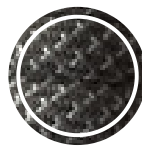
Seat height: 29 cm



White aluminium



Graphite aluminium



Rope tk-r12t



Rope tk-r16t



White textilene



Graphite textilene

