

outdoor

## Bistro outdoor

# Dining table stand with round top / pie de mesa con tapa redonda

Manel Molina 2017

C903 R 70



Structure made of oval stainless steel tube, finished with polyester powder. Tabletop options: HPL Trespa® 13 mm/0.51" thick and Dekton® 8 mm/0.31" thick. Delivered unassembled.

Estructura fabricada en tubo oval de acero inoxidable, acabado en pintura de polvo de poliéster. Opciones de tablero: HPL Trespa® de 13 mm y Dekton® de 8 mm. Se sirven desmontadas.

### Shipment details

Qty 1 dining table (1 box)

Volume 0,40 m<sup>3</sup> / 14.1 ft<sup>3</sup>

#### HPL Top option

Gross weight 20 kg / 44 lb

Net weight 14 kg / 31 lb

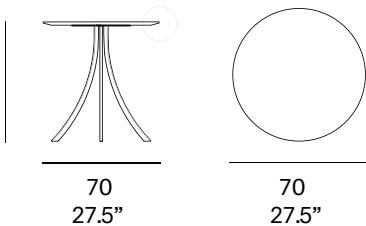
#### Dekton Top option

Gross weight 26 kg / 57.3 lb

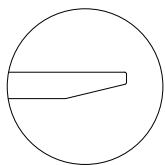
Net weight 20 kg / 44 lb

Item dimensions (width x depth x height) 70 x 70 x 74 cm  
27.5" x 27.5" x 29.25"

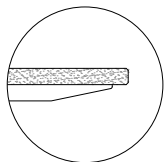
74  
29.25"



Tabletop options:



- HPL Trespa® 13 mm/0.51" thick.



- Dekton® 8 mm/0.31" +  
HPL Trespa® 8 mm/0.31" thick.



60  
23.5"

3 legs

**expormim**

Expormim S.A.  
Pol. Ind. Jaime I  
46640 Moixent (Valencia) Spain  
+34 962 295 144/5  
export@expormim.com  
www.expormim.com

Expormim USA LLC  
(212) 204-8572  
usa@expormim.com  
www.expormim.com

1/3

frame / estructura

metallic finishes / metales



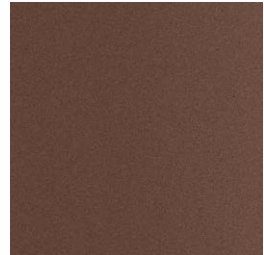
100 white



102 FT light grey  
fine textured



111 FT graphite  
fine textured



108 FT oxide  
fine textured



109 FT champagne  
fine textured



110 FT bronze  
fine textured



113 FT sage  
fine textured

outdoor

top / tapa

HPL Trespa® - premium



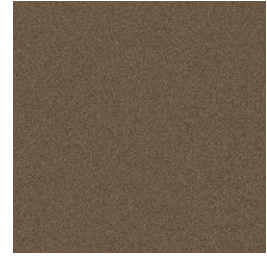
320 silver quartzite - matt



321 italian slate - matt



327 titanium bronze - satin

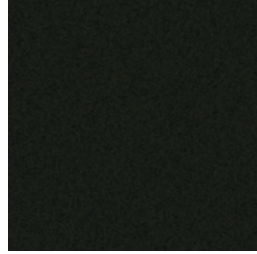


328 urban brown - satin

HPL Trespa® - basic



300 white



301 black

Dekton®



D3 danae



D4 keon



D2 kelya