

AUKI

Hee Welling | 2015



AUKI

Hee Welling | 2015

There are moments during the day that go beyond a right angle and seek the sinuous embracing line that supports the body, protects and relaxes it. These are moments for the AUKI armchair. Like a shell, its curved shape gently opens up to create a subtle armrest. The headrest and stool complete its sheer comfort and transform the chair into an elegant chaise-longue. A wide choice of base supports, for the two different complementary small tables, square and round, enhance this perfectly versatile armchair.



AUKI

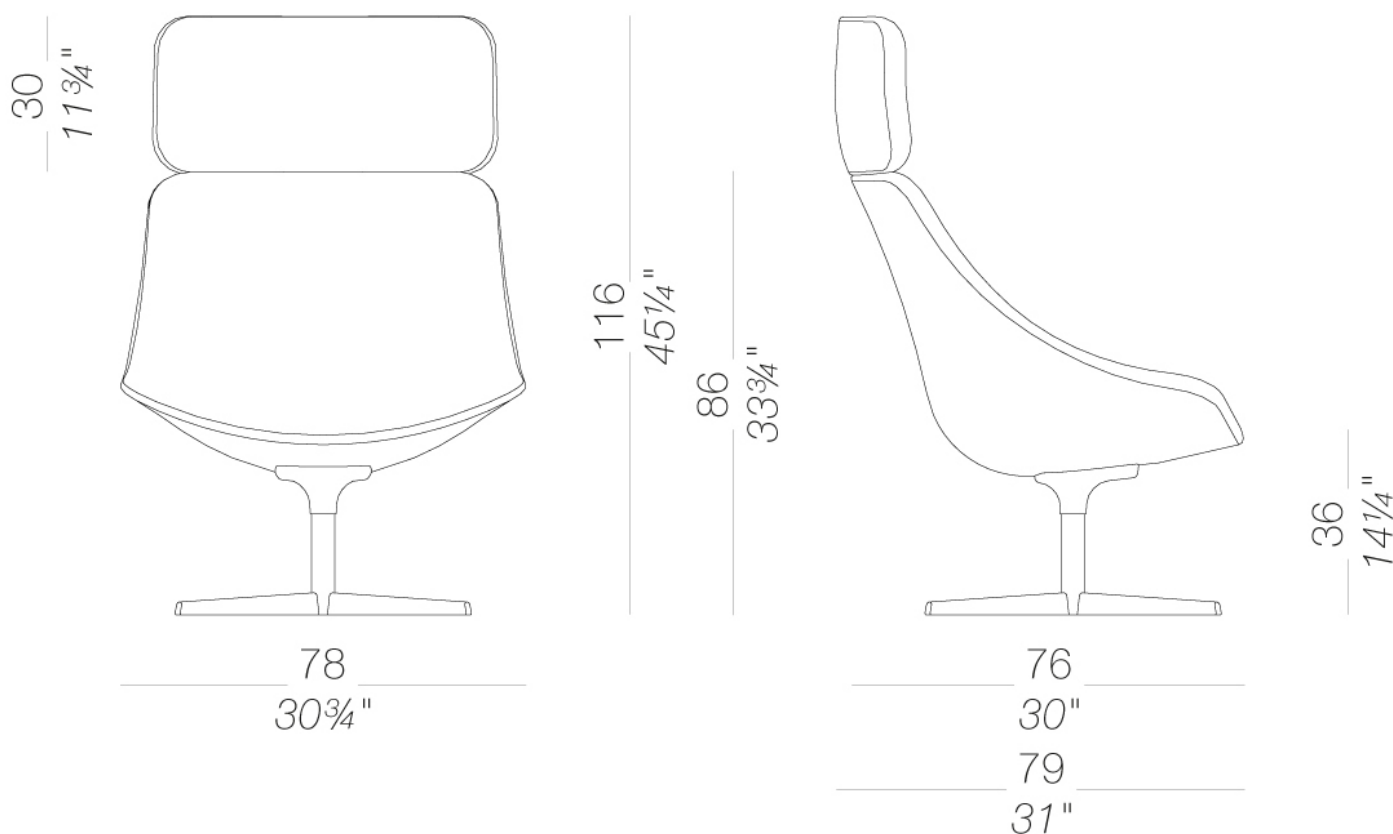
Hee Welling | 2015

S113 lounge chair star-shaped swivel base

AUKI | S112 S113 S115 S117 S118

Lounge chair with fire-retardant moulded polyurethane foam upholstered with fabric, soft leather or eco-leather. Four legged base in metal or ash, 4-star or round swivel base.

TEST 1 IM - Remix



AUKI

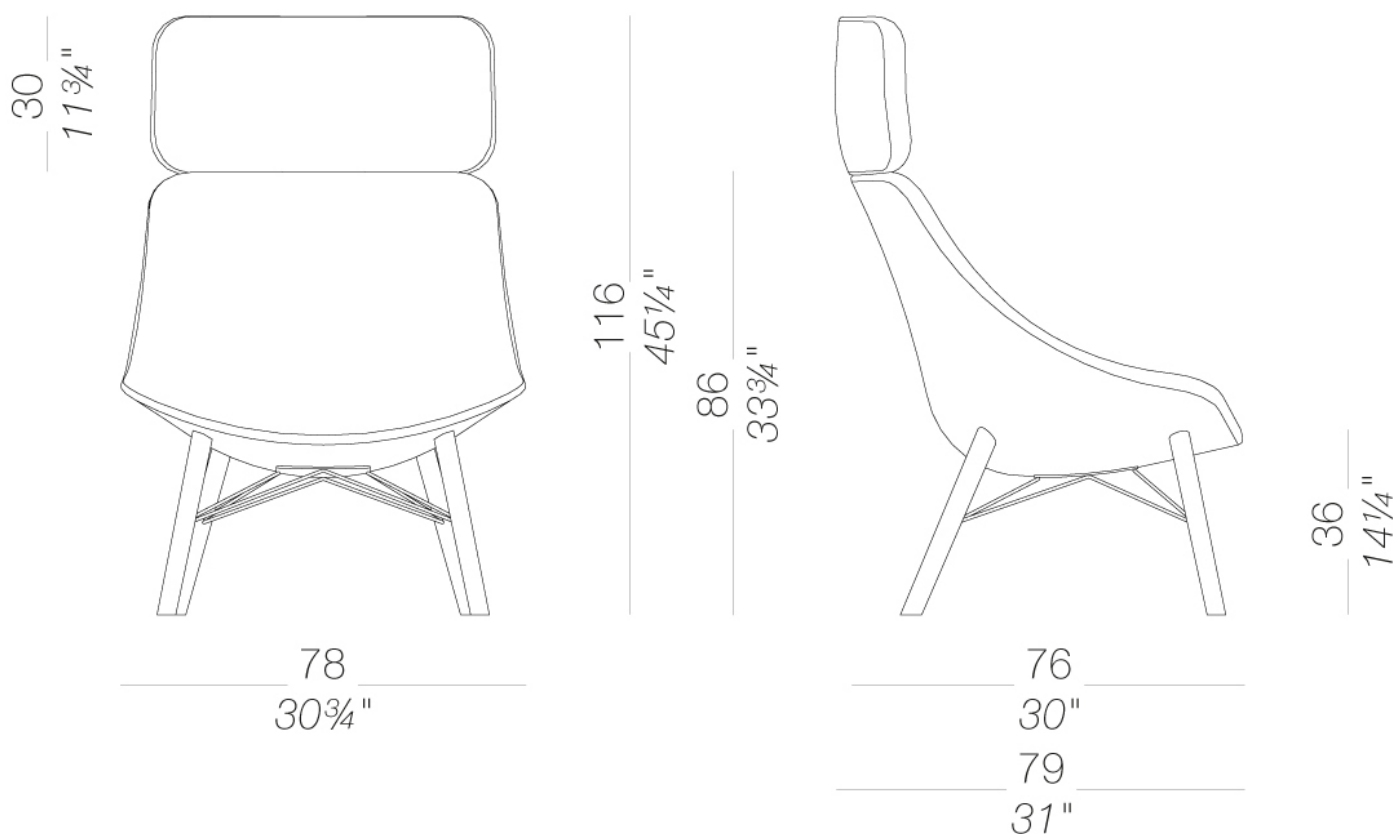
Hee Welling | 2015

S115 upholstered armchair wood legs

AUKI | S112 S113 S115 S117 S118

Lounge chair with fire-retardant moulded polyurethane foam upholstered with fabric, soft leather or eco-leather. Four legged base in metal or ash, 4-star or round swivel base.

TEST 1 IM - Remix



AUKI

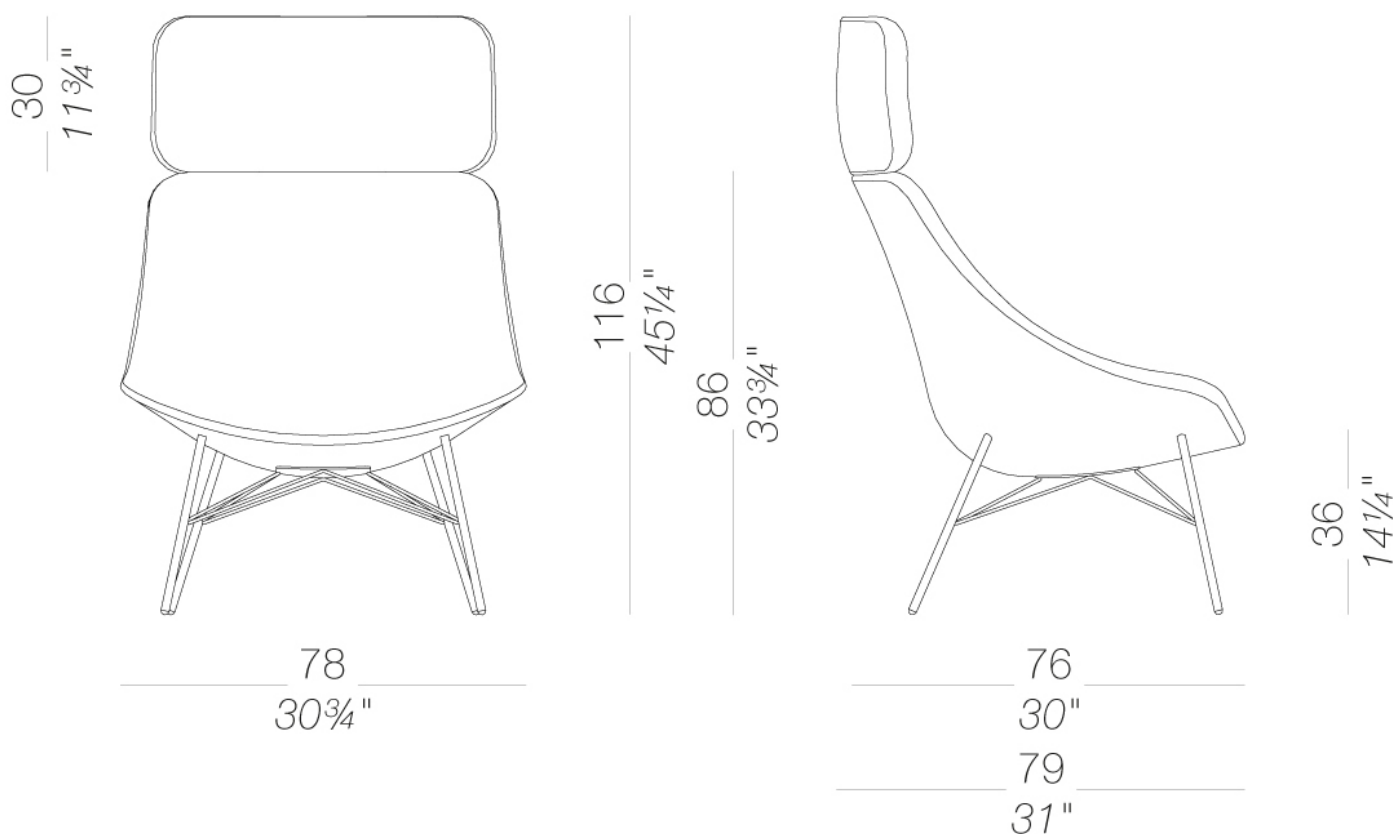
Hee Welling | 2015

S112 upholstered armchair with metal legs

AUKI | S112 S113 S115 S117 S118

Lounge chair with fire-retardant moulded polyurethane foam upholstered with fabric, soft leather or eco-leather. Four legged base in metal or ash, 4-star or round swivel base.

TEST 1 IM - Remix



AUKI

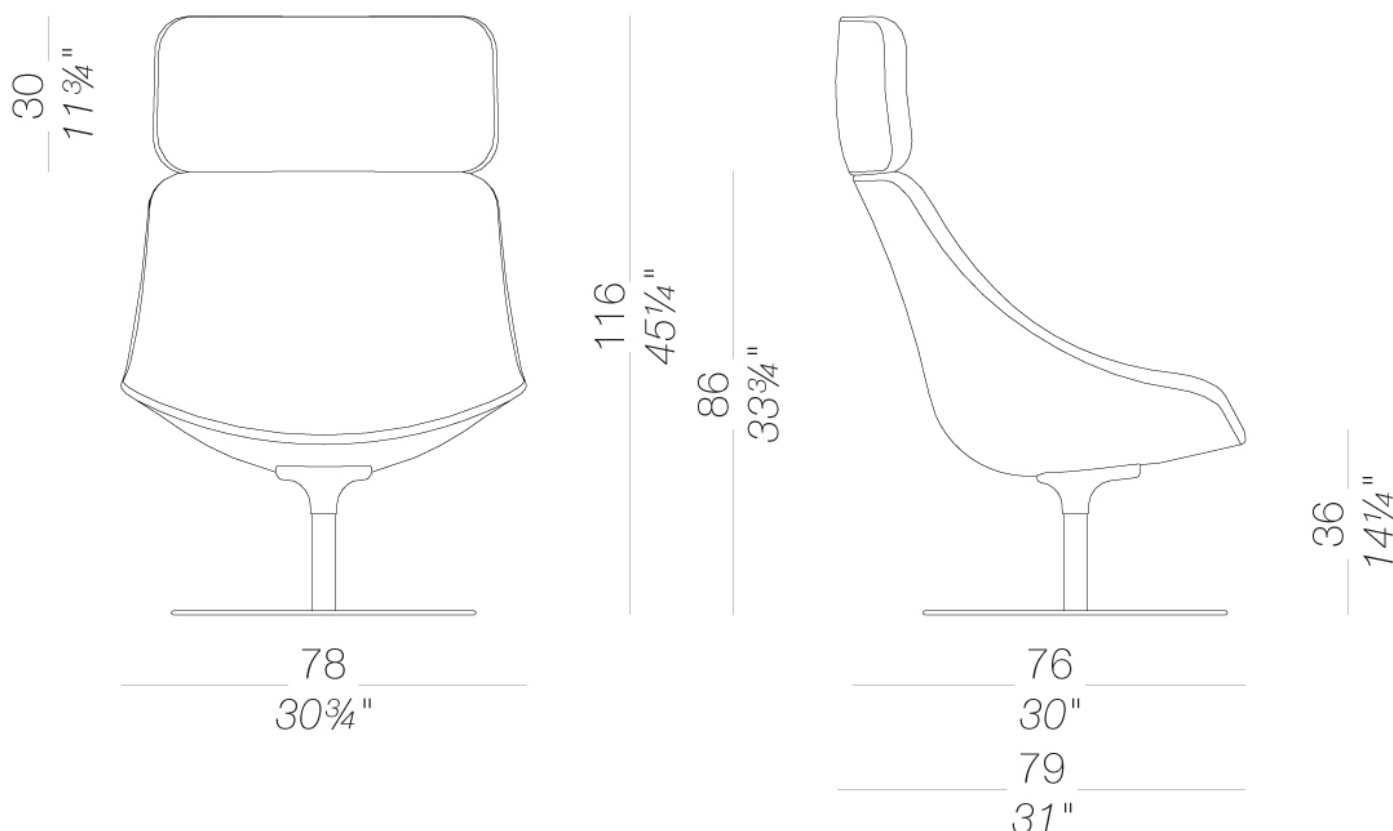
Hee Welling | 2015

S117 lounge chair round swivel base

AUKI | S112 S113 S115 S117 S118

Lounge chair with fire-retardant moulded polyurethane foam upholstered with fabric, soft leather or eco-leather. Four legged base in metal or ash, 4-star or round swivel base.

TEST 1 IM - Remix



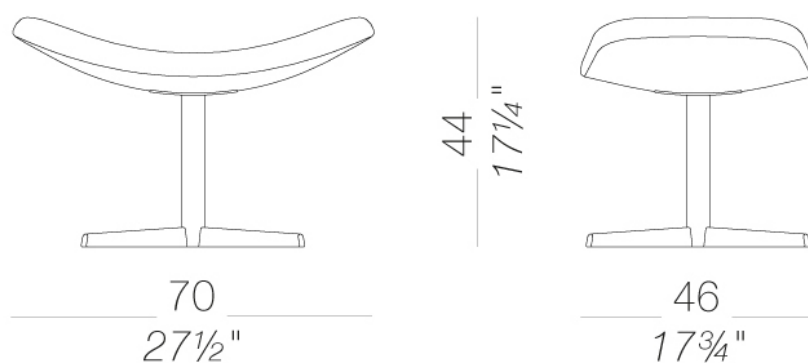
AUKI

Hee Welling | 2015

S114 upholstered footrest with star-shaped metal base

AUKI | S114 S116

Footstool with fire-retardant moulded polyurethane foam upholstered with fabric, soft leather or eco-leather. 4-star metal base powder coated or mat chromed or with wooden legs.



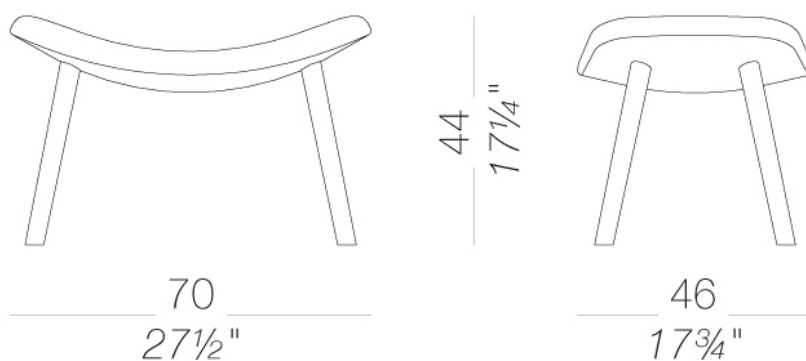
AUKI

Hee Welling | 2015

S116 upholstered footrest with wood legs

AUKI | S114 S116

Footstool with fire-retardant moulded polyurethane foam upholstered with fabric, soft leather or eco-leather. 4-star metal base powder coated or mat chromed or with wooden legs.

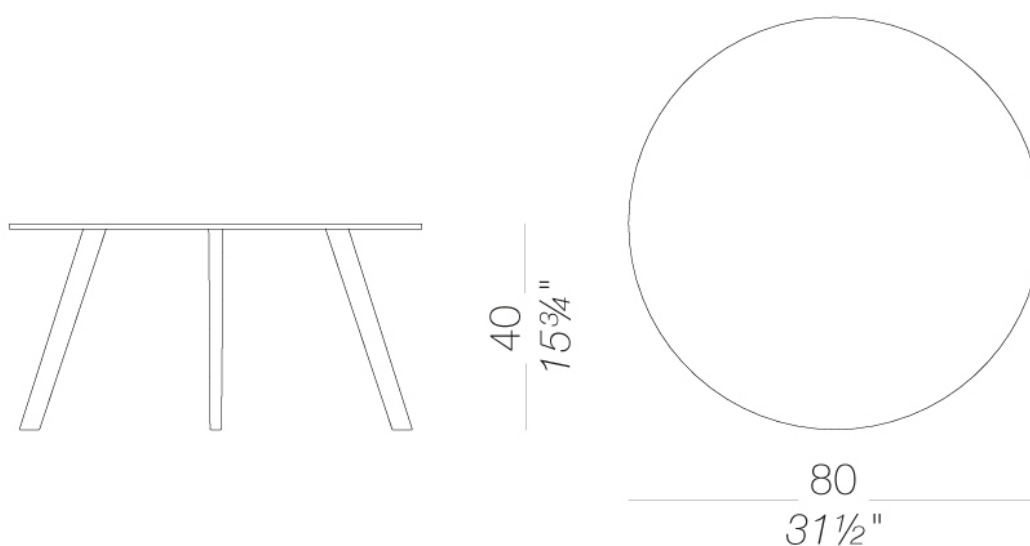


AUKI

Hee Welling | 2015

P19 Round small table with ash legs Ø80 H.40

Coffee table with natural ash wood legs or black stained open pore. Top in HPL Fenix black or white.

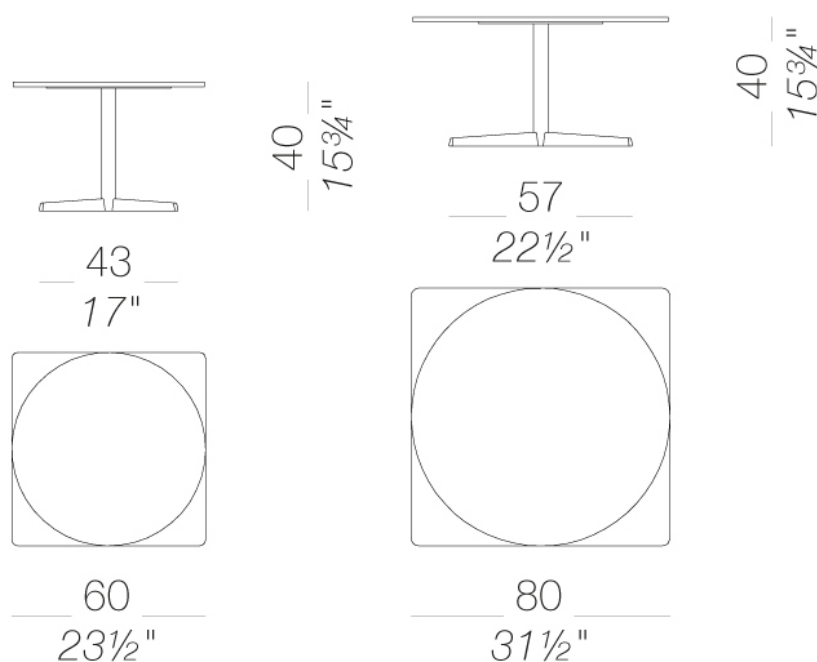


AUKI

Hee Welling | 2015

H40 With star-shaped base Ø60 60x60 | Ø80 80x80

Coffee table with star base in aluminium, column and fixing plate in powder coated steel. Glides in polythene. Table tops in plywood of birch wood veneered in several finishes or in laminate with visible plywood edge, or in HPL laminate 10 mm.

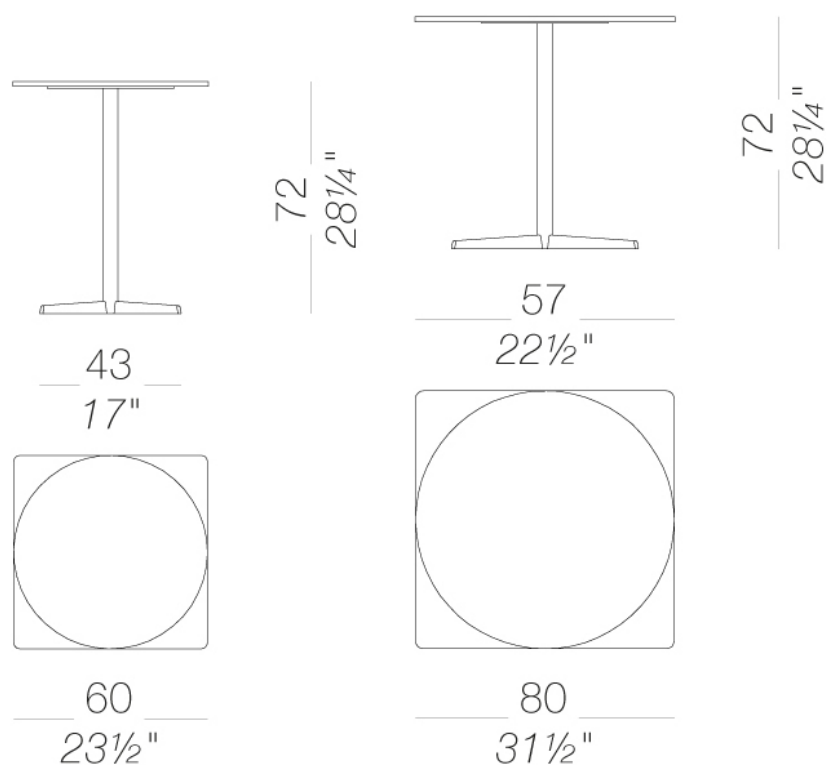


AUKI

Hee Welling | 2015

H72 star-shaped base Ø60 60x60 | Ø80 80x80

Table with 4 star die cast aluminium base and metal column powder coated. Feet in polythene. Tops in plywood of birch, wood veneered or laminates in several finishes with visible edge. Also available in full laminate 10 mm. in several finishes.



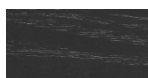
frame



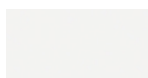
powder coating
black
1 Colors



wood
natural ash
1 Colors



wood
black open pore
1 Colors



powder coating
white
1 Colors



metal
stainless steel
1 Colors

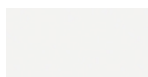


metal
mat chromed
1 Colors

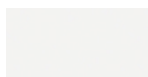
top



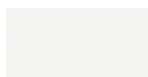
HPL 10 mm
black HPL fenix
1 Colors



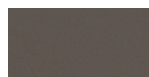
laminate
406 abet 9/10
1 Colors



HPL 10 mm
HPL H406
1 Colors



HPL 10 mm
white HPL fenix
1 Colors



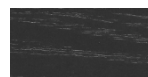
HPL 10 mm
HPL fenix grigio
londra
1 Colors



HPL 10 mm
HPL fenix rosso
jaipur
1 Colors



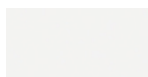
wood
blanch oak
1 Colors



wood
black open pore
1 Colors



wood
oak dark walnut
1 Colors



lacquered
white lacquered
1 Colors

upholstery



fabric
Hallingdal 65
47 Colors



fabric
Canvas 2
40 Colors



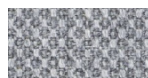
fabric
Steelcut Trio 3
48 Colors



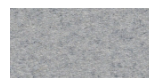
fabric
Remix 3
24 Colors



fabric
Clara 2
24 Colors



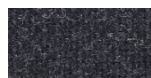
fabric
Fiord 2
24 Colors



fabric
Divina MD
24 Colors



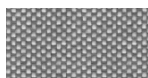
fabric
Divina Melange 3
24 Colors



fabric
Tonica 2
39 Colors



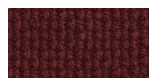
fabric
Medley
37 Colors



fabric
Maya
43 Colors



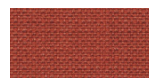
fabric
Jet
44 Colors



fabric
Lapalma Smart
18 Colors



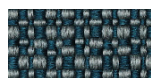
fabric
Capture
43 Colors



fabric
Crisp
40 Colors



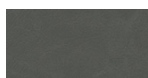
fabric
Nattè
23 Colors



fabric
Iris
24 Colors



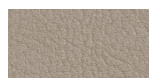
fabric
Steelcut 2
37 Colors



soft-leather
soft-leather
7 Colors



ecoleather
GRIMM FR
24 Colors



ecoleather
Valencia c5
59 Colors

consult the portfolio for the range of colors, fabrics, eco-leather, soft-leather.

use and maintenance instructions

Clean all parts in wood, leather, fabric and metal with a damp cloth or a diluted neutral cleaner. Do not use cleaners with alcohol, bleach, solvent or abrasive products. Any liquid spilt on the product must be wiped up immediately. When lifting or moving the product, hold it on the structure and not under the seat. The product should not be subjected to unbalanced weights, as it is designed for a proper rest on the foothold (on four legs or on the base). Our company relieves from any responsibility in case of damage caused to fragile floors. Avoid any improper use of the product: do not step on the product, on the footrest or on the armrests. Avoid any movements that could compromise the proper functionality of the product or the safety of the users. Wood and leather, being natural materials, could be easily damaged. Small impurities or imperfections are within quality standard range. Do not expose the product to weather conditions or atmospheric agents, nor to heat sources over 40°C. Also products for outdoor use could be afflicted by atmospheric agents. The product could undergo possible exterior changes due to particular exposure to heat, humidity and saltiness. An appropriate and frequent maintenance and cleaning of the product enhances its durability. The product could change colour and shade, if exposed to direct sunlight. Maintenance has to be carried out by experienced staff. Dispose of the package only after assembling the product, in order to avoid the loss of ironmongery and components. Once the product has been dismantled, the product itself or its components must be given to the public garbage disposal system, according to the legislation in force.